



Operation Highway of Hell

BRIEFING

Contents

Overall Situation.....	2
Weather	2
Flight & Weapon data	2
Mission Criteria	3
Comm Plan & Data Link.....	3
Summary	4
IFF	4
Ordenance.....	4
Enemy Threat/ INTEL	5
ROE	6
Code Words	6
Mandatory Calls:	6
NAVAIDS	7





TO	AB	Callsign	Task	TGT	TOT	Pkg	Alt Field	AC N.º&Type
05:12:06	USS Enterprise	Dragnet2	ELINT	---	05:45:33	2102	USS Enterprise	1 x E-8C
05:33:57	Chungwon AB	Dragnet7	AEW/ABCC C	---	05:45:00	2102	R605	1 x E-3
06:26:27	Kunsan AB	Hawkeye7	ESCORT/ HAVCAP	Jackal5	06:57:00	2099	Seosan AB	4 x F-16AM RNoAF
06:28:51	Kunsan AB	Jackal5	Pre-planed CAS	Tank Battalions	07:02:31	2099	Seosan AB	4 x F-16AM RNoAF
06:40:25	USS Enterprise	Wildcat5	BARCAP	---	06:46:00	2127	USS Enterprise	4 x F14D
06:41:51	USS Theodore Roosevelt	Wildcat7	HAVCAP	Jackal5	07:00:00	2148	USS Theodore Roosevelt	4 x F-14D

Red: AI flights

Mission Criteria

Mission Success: 12 or more tanks destroyed.

Mission Partial Success: between 8 and 12 tanks destroyed.

Mission Failure: less than 8 tanks destroyed.

Comm Plan & Data Link

Comm Ladder				
Agency:	Callsign:	UHF [Chnl]:	VHF [Chnl]:	Notes:
Intra-Flight:	Jackal5 Hawkeye7	---	143.750 MHz [15] 140.175 MHz [16]	Flight Management Comms
Guard:	None	243.000 MHz [13]	121.500 MHz [13]	Distress/Emergency
Common:	None	339.750 MHz [14]	123.500 MHz [14]	Advisory/UNICOM
Base Ops:	None	272.700 MHz [1]	--	Homeplate Ops.
Check-In:	Dragnet7	355.375 MHz [5]	--	AWACS:Global Check-In
Tactical:	Dragnet7	351.725 MHz [6]	--	AWACS:Pckg Comms
Dep Atis:	Kunsan ATIS	--	120.225 MHz	Departure Airbase
Dep Ground:	Kunsan Ground	273.525 MHz [2]	--	Departure Airbase
Dep Tower:	Kunsan Tower	292.300 MHz [3]	122.100 MHz [3]	Departure Airbase
Dep Departure:	Kunsan Departure	292.650 MHz [4]	--	Departure Airbase
Arr Atis:	Kunsan ATIS	--	120.225 MHz	Recovery Airbase
Arr Approach:	Kunsan Approach	292.650 MHz [4]	--	Recovery Airbase
Arr Tower:	Kunsan Tower	292.300 MHz [3]	122.100 MHz [3]	Recovery Airbase
Arr Ground:	Kunsan Ground	273.525 MHz [2]	--	Recovery Airbase
Alt Atis:	Seosan ATIS	--	130.300 MHz	Alternate Airbase
Alt Approach:	Seosan App.	253.950 MHz [10]	--	Alternate Airbase
Alt Tower:	Seosan Tower	353.100 MHz [11]	126.750 MHz [11]	Alternate Airbase
Alt Ground:	Seosan Ground	275.800 MHz [12]	--	Alternate Airbase



Summary

Callsign	VHF	UHF	IDM	TCN
Jackal5	15	6	1	12Y/75Y
Hawkeye7	16	6	2	13Y/76Y
Ground	UHF 2/9			
Tower	UHF3/8			
Departure/Arrival	UHF 4/7			

IFF

GENERAL													
Initial STAT Settings:		Modes Active: M124		Codes:		M1: 43			M2: 0454		M3: 4354		
M4 Validity Time (Until):		Key A: Day4 00:00		Key B: Day5 00:00									
IFF Policy:		M1: per team		M2: per aircraft		M3: per aircraft							
Code Change Setting:		TIM											
TIME EVENTS													
Rot/day:	05:00	06:00	07:00	08:00	09:00	10:00	11:00	12:00	13:00	14:00	15:00	16:00	05:00
M1:	24	71	62	61	11	02	52	11	10	12	12	50	10
M3:	24	5130	7004	7554	6104	3630	2054	5430	1104	0254	4330	5254	0104
M4:	1	A	A	A	A	A	A	A	A	A	A	A	A
POS EVENTS													
Ingress: M124 / --		Egress: M124 / ----											
--													

Ordnance

Callsign:	Flt Lead:	Wing Two:	Elem Lead:	Elem Two:
Jackal5	- Jackal51 -	- Jackal52 -	- Jackal53 -	- Jackal54 -
	510 x 20mm M61	510 x 20mm M61	510 x 20mm M61	510 x 20mm M61
	2 x AIM-120B AMRAAM	2 x AIM-120B AMRAAM	2 x AIM-120B AMRAAM	2 x AIM-120B AMRAAM
	2 x IRIS-T	2 x IRIS-T	2 x IRIS-T	2 x IRIS-T
	4 x GBU-12 B/B/HE	4 x GBU-12 B/B/HE	4 x GBU-12 B/B/HE	4 x GBU-12 B/B/HE
	2 x Tank 370gal	2 x Tank 370gal	2 x Tank 370gal	2 x Tank 370gal
	1 x AN/AAQ-33 SNIPER	1 x AN/AAQ-33 SNIPER	1 x AN/AAQ-33 SNIPER	1 x AN/AAQ-33 SNIPER
Hawkeye7	- Hawkeye71 -	- Hawkeye72 -	- Hawkeye73 -	- Hawkeye74 -
	510 x 20mm M61	510 x 20mm M61	510 x 20mm M61	510 x 20mm M61
	4 x AIM-120B AMRAAM	4 x AIM-120B AMRAAM	4 x AIM-120B AMRAAM	4 x AIM-120B AMRAAM
	2 x IRIS-T	2 x IRIS-T	2 x IRIS-T	2 x IRIS-T
	2 x Tank 370gal	2 x Tank 370gal	2 x Tank 370gal	2 x Tank 370gal
	1 x Tank 300gal	1 x Tank 300gal	1 x Tank 300gal	1 x Tank 300gal

Callsign	Distance	Gross Weight	Drag Factor	Fuel
Jackal5	408	36993	224	12194
Hawkeye7	413	36176	134	14234



The map displays the Korean Peninsula with various military assets and radar coverage. Key labels include:

- SA5**: Multiple locations, primarily in the northern and eastern regions.
- MIG-23**: Located in the central-northern region.
- SA2**: Multiple locations, including one in the central region and another in the southern region.
- MIG-29A**: Located in the central region.
- SA3**: Multiple locations, including one in the central region and another in the southern region.
- MIG-21**: Located in the southern region.
- FLOT**: Located in the southern region.
- Radar Coverage**: Indicated by red and yellow shaded areas.
- Grid Lines**: A grid system is overlaid on the map.
- Other Labels**: ZKP, ZPD-OT, K(R) 73A&B, and various numerical data points (21.1, 51.4, 65.3).

Enemy CAP aircraft are likely to be operating within operation area.

There are no known enemy air defense assets along your flight path.



ROE

1. Jackal51 is Mission Commander;
2. All flight paths are unchangeable;
3. Load out is changeable;
4. Mission begins in Rampstart.

Code Words

- Mission Abort – ShutDown
- Flight Abort – EagleShot
- Element Abort – BrokenWing
- Mission Success – TouchDown
- Mission Failure – BrokenLeg
- At Holding Station – On Chair
- Over FLOT – In/Out Woods
- In/Out of TGT Area – In/Out Playground

Mandatory Calls:

- At Holding Station
- Over FLOT
- In/Out of TGT (Strike only)

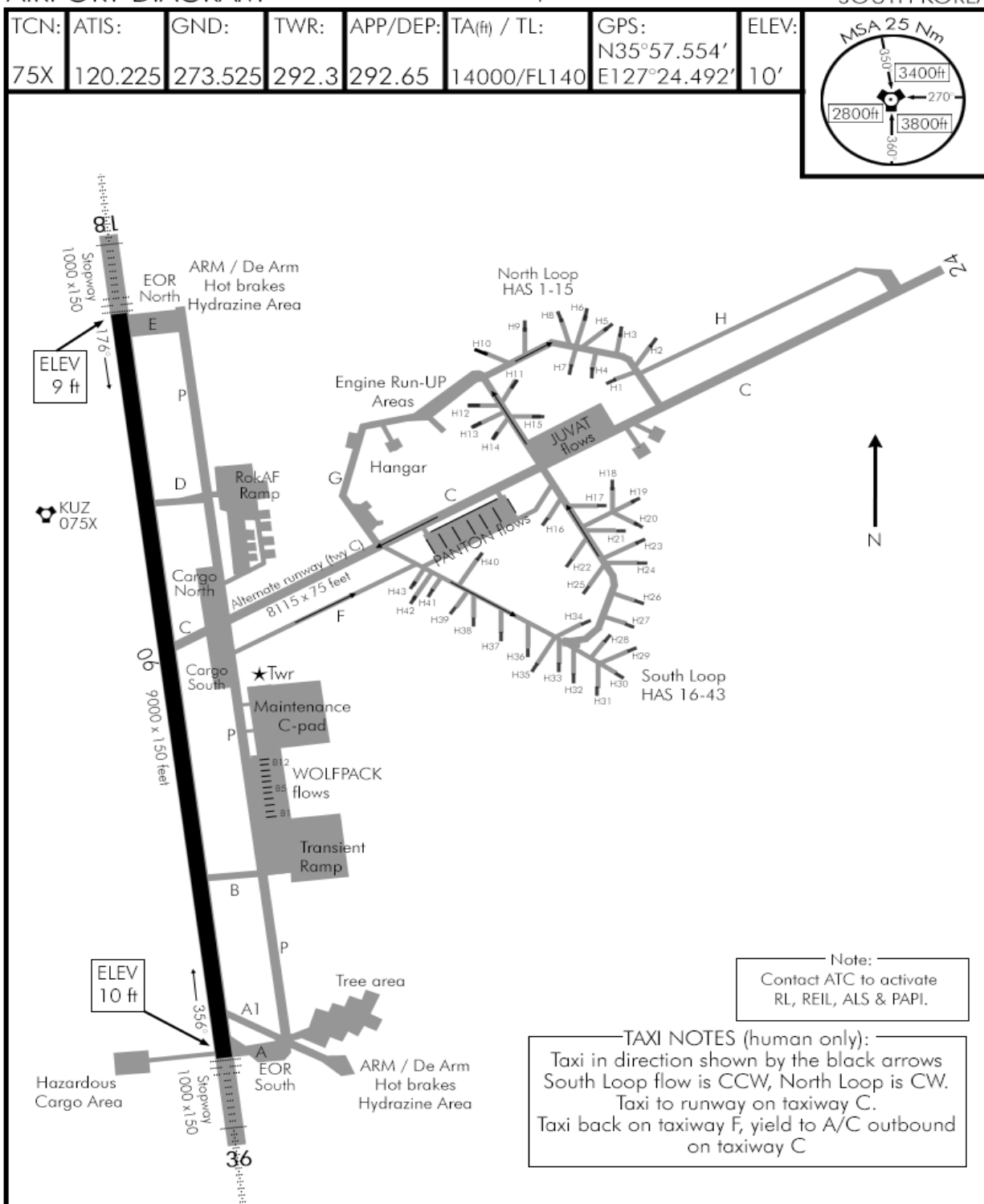
NAVAIDS

KOREAN NAVIGATION VOLUME

AIRPORT DIAGRAM

Date: 02 July 17

KUNSAN AB (RKJK)
SOUTH KOREA



AIRPORT DIAGRAM

NOT FOR REAL NAVIGATION - FALCON 4 BMS ONLY

© COMBATSIM CHECKLISTS 2017

KUNSAN AB (RKJK)
SOUTH KOREA



87TH STRAYDOGS

VIRTUAL FIGHTER WING

Since 1999

KOREAN NAVIGATION VOLUME

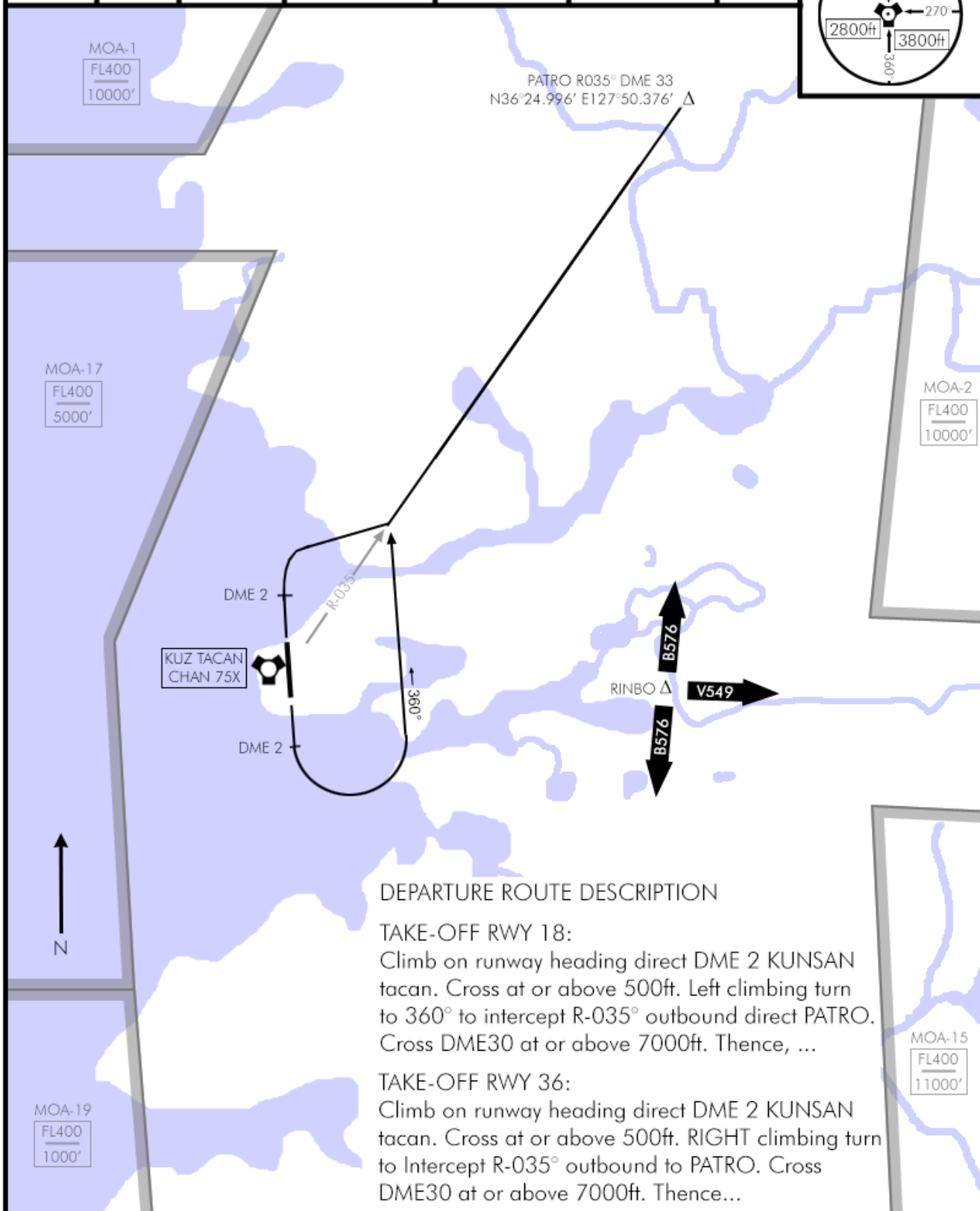
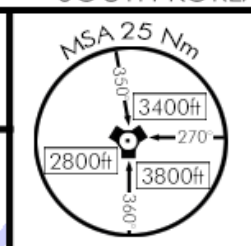
KUNSAN AB (RKJK)

SOUTH KOREA

PATRO DEPARTURE

Date: 02 July 17

TACAN:	TWR:	APP/DEP:	TRANS LEVEL:	TRANS ALT:	GPS:	ELEV:
075X	292.3	292.65	FL140	14000ft	N35°57.554' E127°24.492'	10'



DEPARTURE ROUTE DESCRIPTION

TAKE-OFF RWY 18:

Climb on runway heading direct DME 2 KUNSAN tacan. Cross at or above 500ft. Left climbing turn to 360° to intercept R-035° outbound direct PATRO. Cross DME30 at or above 7000ft. Thence, ...

TAKE-OFF RWY 36:

Climb on runway heading direct DME 2 KUNSAN tacan. Cross at or above 500ft. RIGHT climbing turn to Intercept R-035° outbound to PATRO. Cross DME30 at or above 7000ft. Thence...

PATRO DEPARTURE

NOT FOR REAL NAVIGATION - FALCON 4 BMS ONLY

© COMBATSIM CHECKLISTS 2017

KUNSAN AB (RKJK)

SOUTH KOREA



87TH STRAYDOGS

VIRTUAL FIGHTER WING

Since 1999

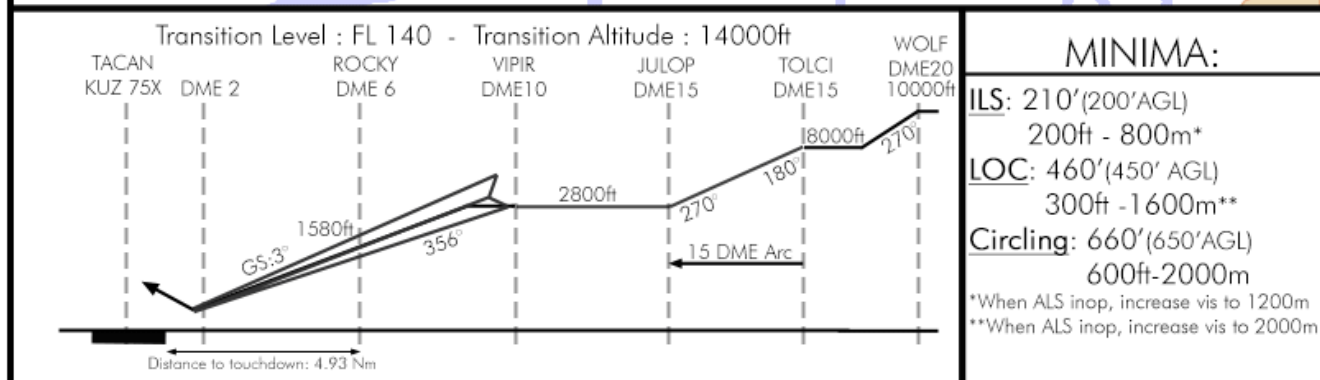
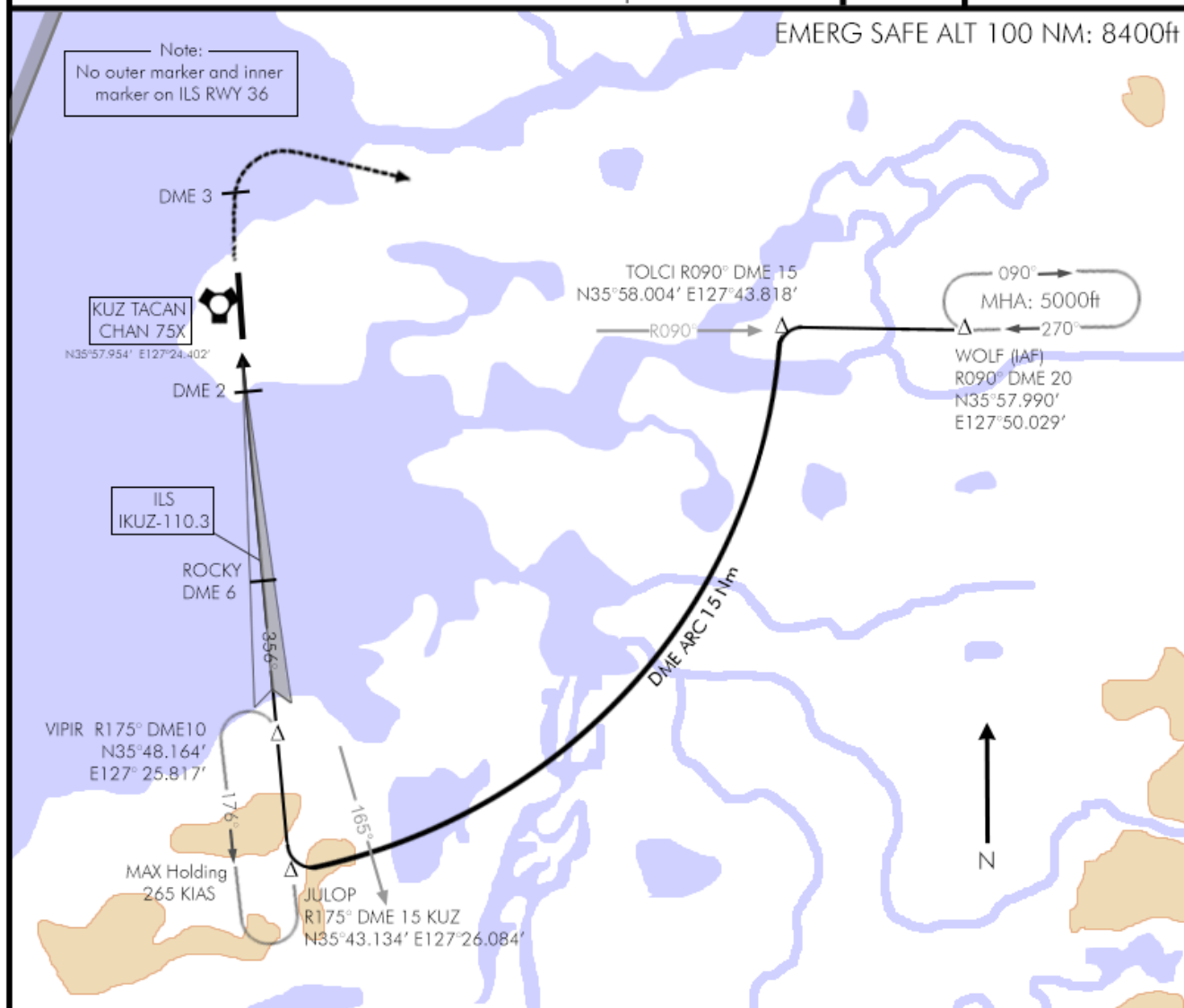
KOREAN NAVIGATION VOLUME

KUNSAN AB (RKJK)
SOUTH KOREA

ILS RWY 36

Date: 02 July 2017

TCN:	ATIS:	APP/DEP:	TWR:	ILS:	ILS DA(H):	LOC:	GPS:	ELEV:	
75X	120.225	292.65	292.3	110.3	210'(200')	356°	N35°57.554' E127°24.492'	10'	
MISSED APPROACH: Climb straight ahead until DME 3 or reaching 2000ft, then RIGHT climbing turn to 5000 direct TOLCI. Continue on R-090° outbound to WOLF IAF at DME 20. Hold as published at 5000								ALSF-1 PAPI	MSA 25 Nm 350° 3400ft 270° 2800ft 360° 3800ft



ILS RWY 36

NOT FOR REAL NAVIGATION - FALCON 4 BMS ONLY

© COMBATSIM CHECKLISTS 2017

KUNSAN AB (RKJK)
SOUTH KOREA



87TH STRAYDOGS

VIRTUAL FIGHTER WING

Since 1999

KOREAN NAVIGATION VOLUME

KUNSAN AB (RKJK)

SOUTH KOREA

ILS RWY 18

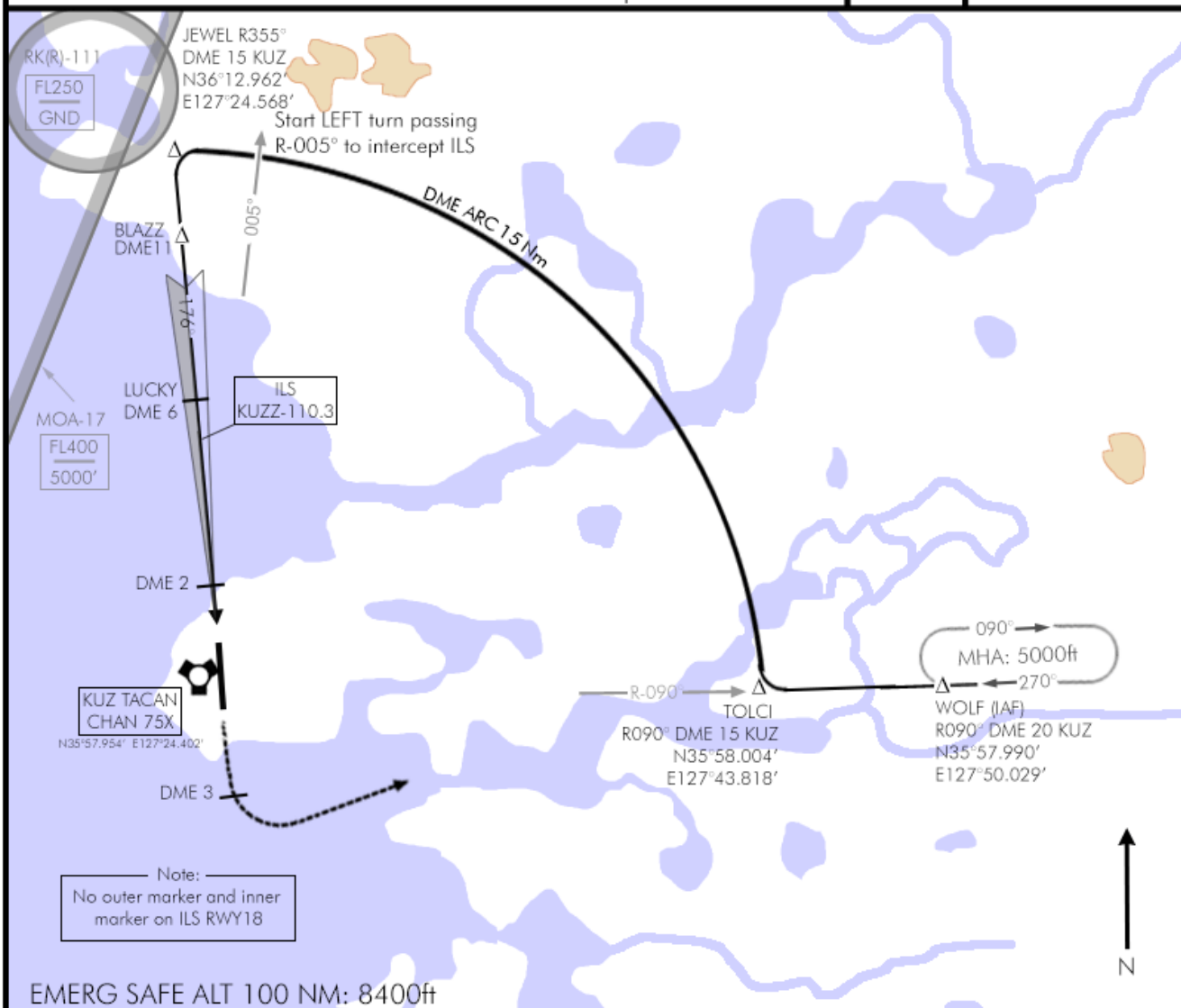
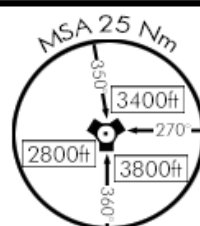
Date: 02 July 17

TCN:	ATIS:	APP/DEP:	TWR:	ILS:	ILS DA(H):	LOC:	GPS:	ELEV:
75X	120.225	292.65	292.3	110.3	210'(200')	176°	N35°57.554' E127°24.492'	10'

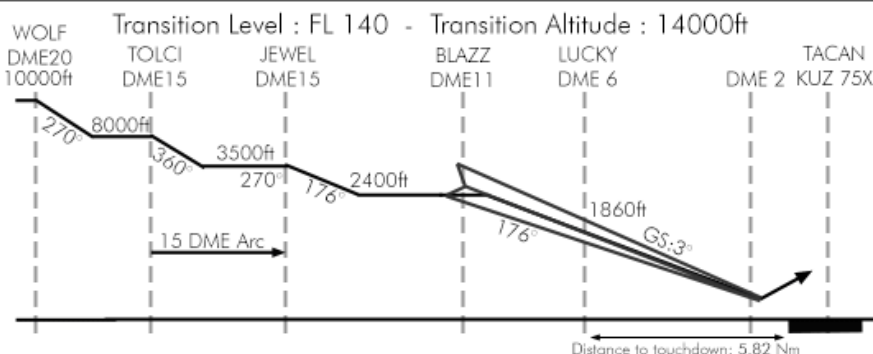
MISSED APPROACH: Climb straight ahead until DME 3 or reaching 2000ft, then LEFT climbing turn to 5000 direct TOLCI. Continue on R-090° outbound to WOLF IAF at DME 20. Hold as published at 5000.

ALSF-1

PAPI



EMERG SAFE ALT 100 NM: 8400ft



MINIMA:

ILS: 210'(200'AGL)

200ft-800m*

LOC: 470'(460' AGL)

300ft -1600m**

Circling: 670'(660'AGL)

600ft -2000m

*When ALS inop, increase vis to 1200m

**When ALS inop, increase vis to 2000m

ILS RWY 18

NOT FOR REAL NAVIGATION - FALCON 4 BMS ONLY

© COMBATSIM CHECKLISTS 2017

KUNSAN AB (RKJK)

SOUTH KOREA



87TH STRAYDOGS

VIRTUAL FIGHTER WING

Since 1999

KOREAN NAVIGATION VOLUME

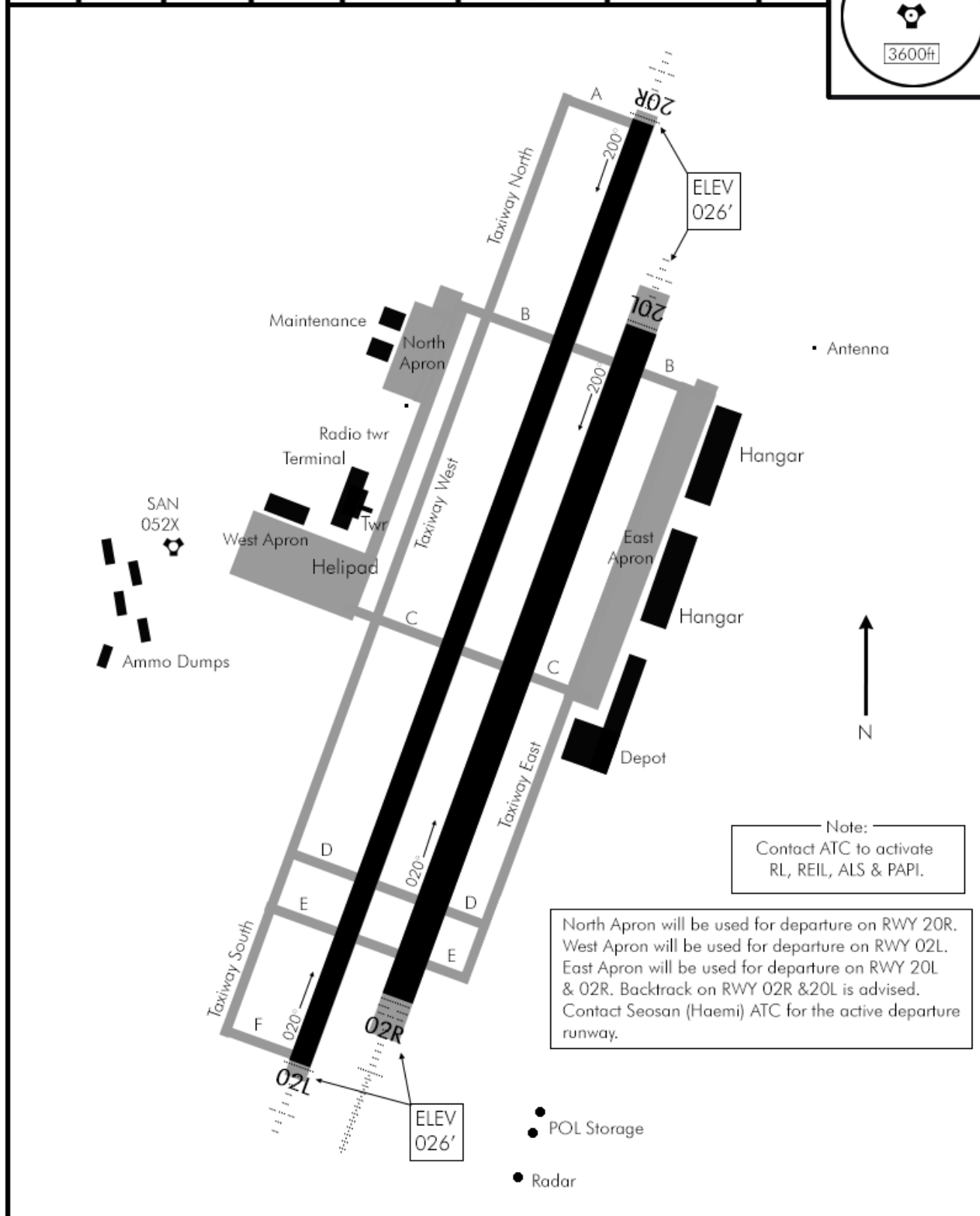
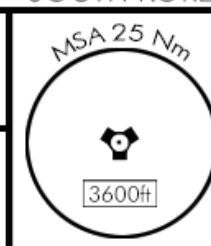
SEOSAN / HAEMI (RKTP)

SOUTH KOREA

AIRPORT DIAGRAM

Date: 2 Oct 2018

TCN:	ATIS:	GND:	TWR:	APP/DEP:	TA (ft) / TL:	GPS:	ELEV:
52X	130.3	275.8	353.1	253.95	14000/FL140	N36°41.807' E127°19.884'	026'



AIRPORT DIAGRAM

NOT FOR REAL NAVIGATION - FALCON 4 BMS ONLY

© COMBATSIM CHECKLISTS 2018

SEOSAN / HAEMI (RKTP)

SOUTH KOREA